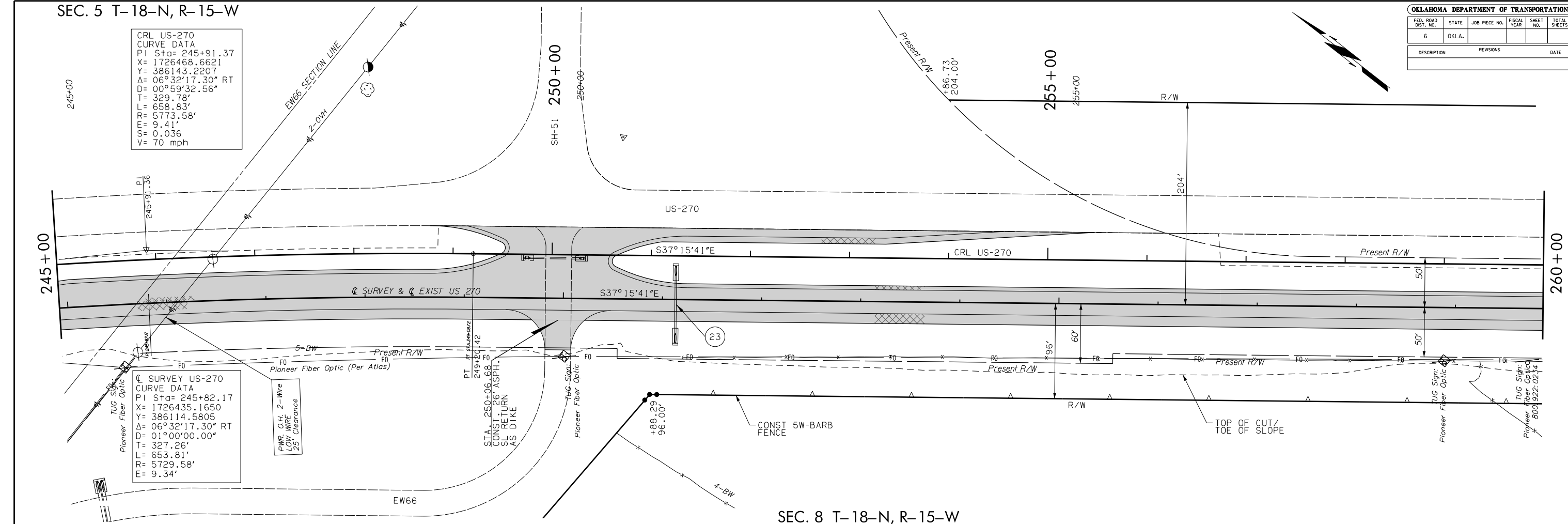


SEC. 5 T-18-N, R-15-W

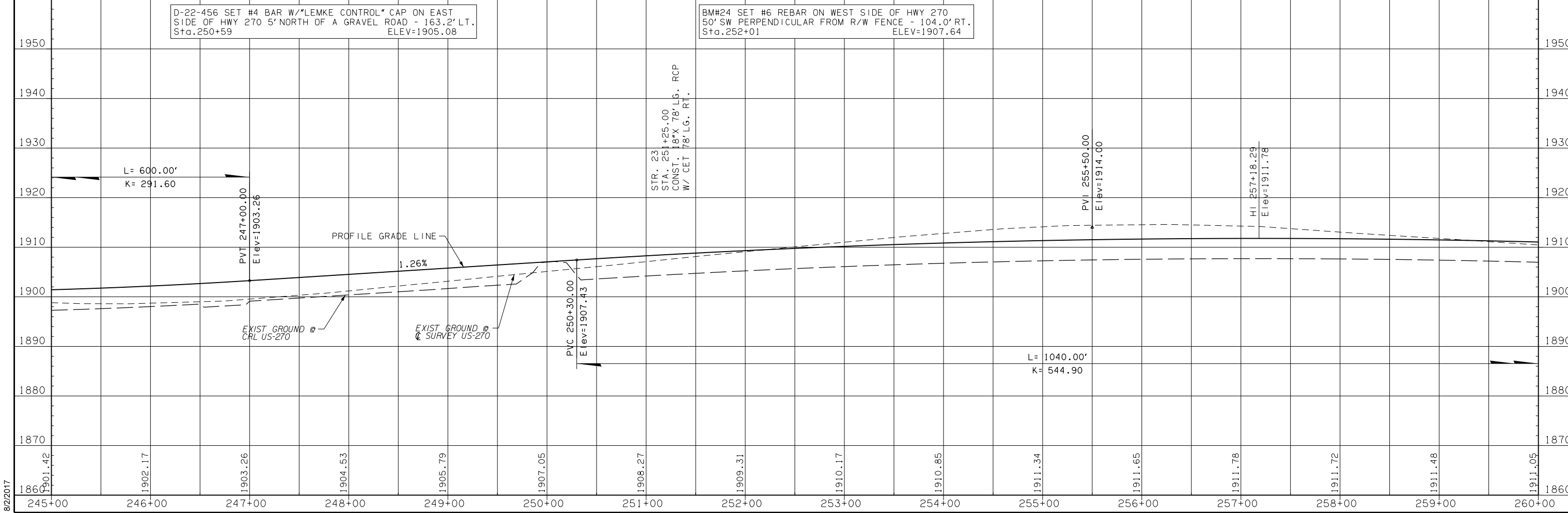
OKLAHOMA DEPARTMENT OF TRANSPORTATION					
FED. ROAD DIST. NO.	STATE	JOB PIECE NO.	FISCAL YEAR	SHEET NO.	TOTAL SHEETS
6	OKLA.				
DESCRIPTION			REVISIONS	DATE	

CRL US-270
CURVE DATA
PI Sta= 245+91.37
X= 1726468.6621
Y= 386143.2207
Δ= 06°32'17.30" RT
D= 00°59'32.56"
T= 329.78'
L= 658.83'
R= 5773.58'
E= 9.41'
S= 0.036
V= 70 mph

☉ SURVEY US-270
CURVE DATA
PI Sta= 245+82.17
X= 1726435.1650
Y= 386114.5805
Δ= 06°32'17.30" RT
D= 01°00'00.00"
T= 327.26'
L= 653.81'
R= 5729.58'
E= 9.34'



SEC. 8 T-18-N, R-15-W



D-22-456 SET #4 BAR W/ "LEMKE CONTROL" CAP ON EAST SIDE OF HWY 270 5' NORTH OF A GRAVEL ROAD - 163.2' LT. Sta. 250+59 ELEV=1905.08

BM#24 SET #6 REBAR ON WEST SIDE OF HWY 270 50' SW PERPENDICULAR FROM R/W FENCE - 104.0' RT. Sta. 252+01 ELEV=1907.64

8/2/2017